



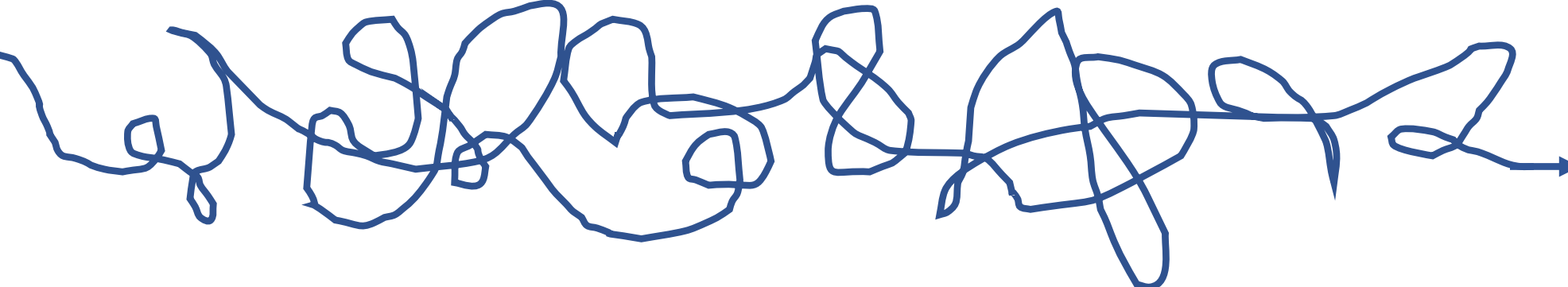
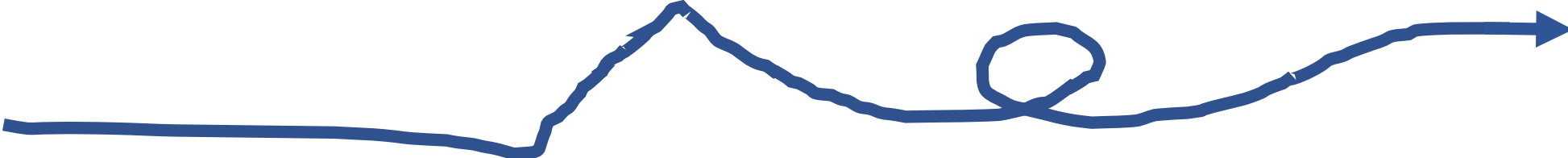
Helping Advisees Explore and Take Action

August 2017

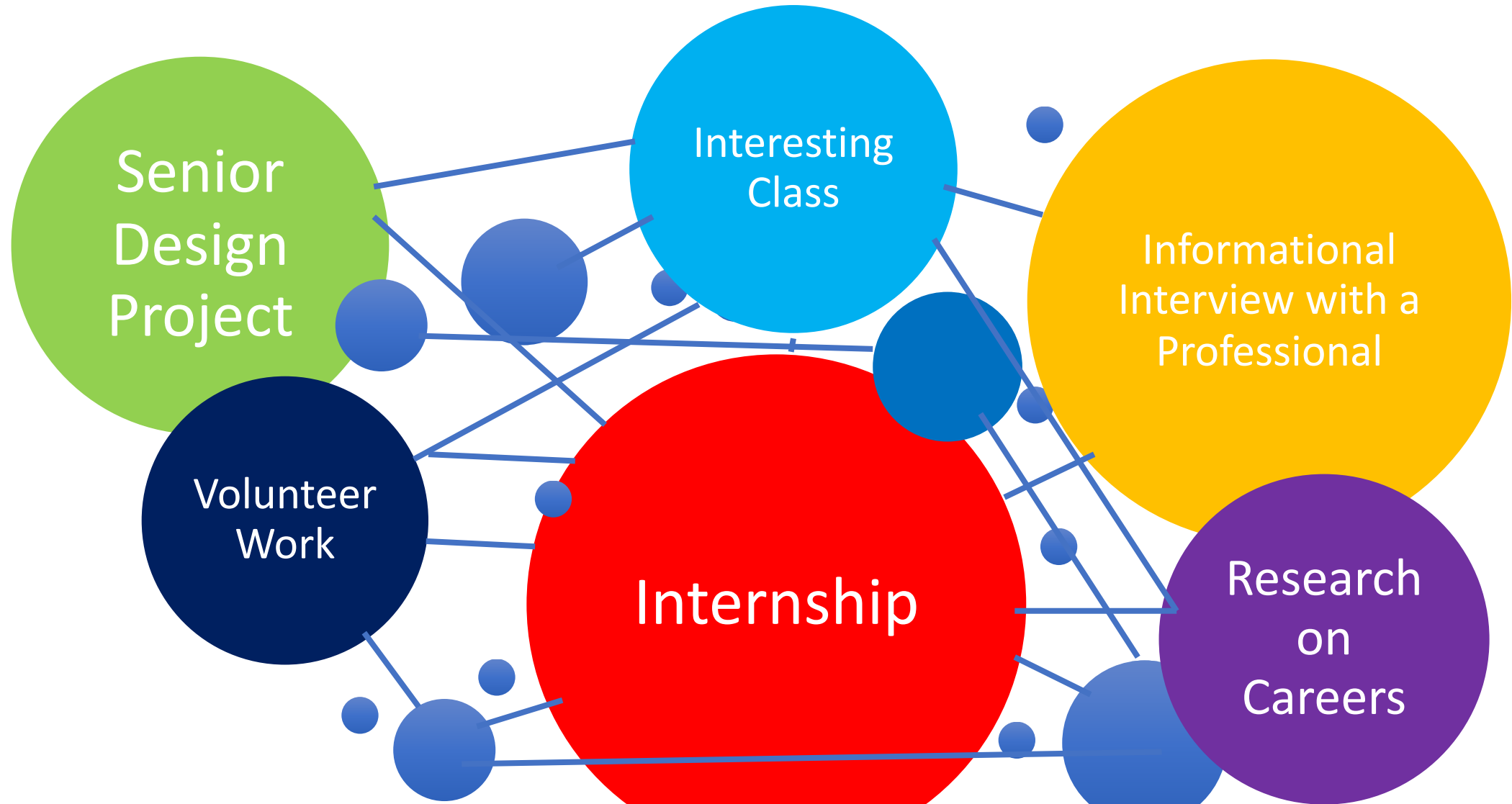
REFLECT & DISCUSS

Think about your career path:
what are 2-3 actions you took or
things that impacted your career
decision?

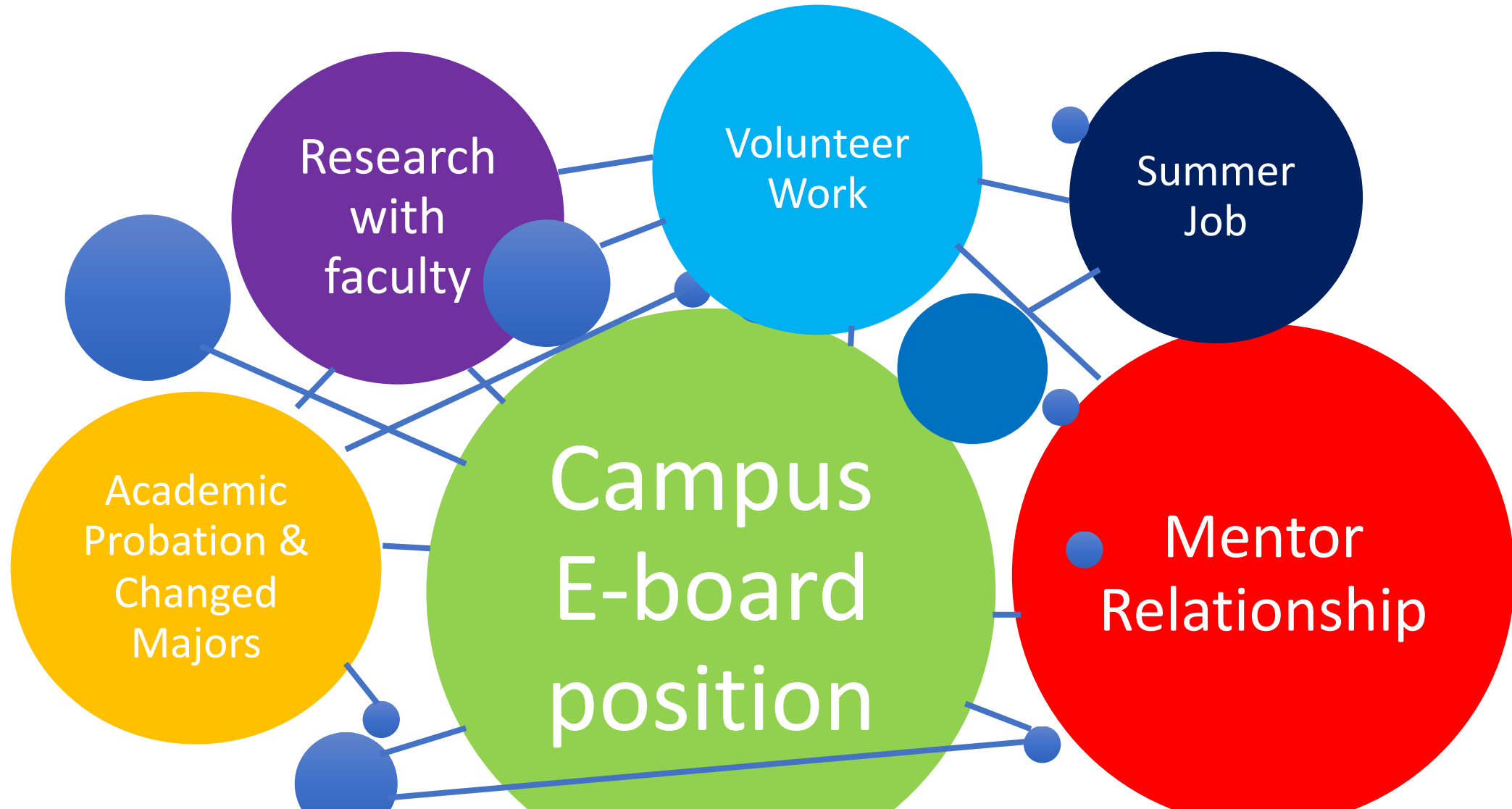
WHAT DOES CAREER DEVELOPMENT LOOK LIKE FOR YOU?



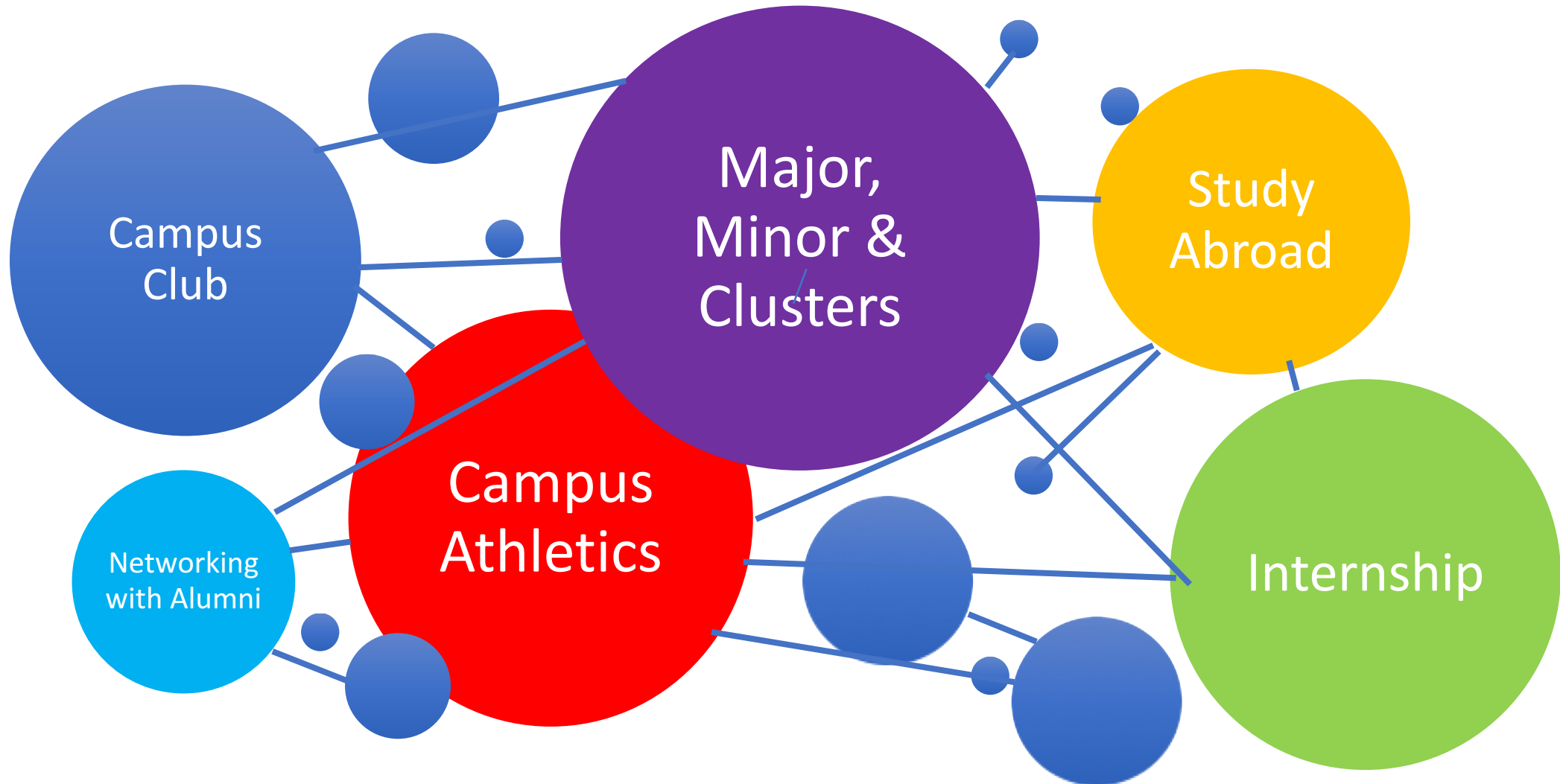
CAREER = ACTIONS, EVENTS & DECISIONS



ACTIONS, EVENTS & DECISIONS



ACTIONS, EVENTS & DECISIONS



CAREER DEVELOPMENT STARTS EARLY

As advisors, how can we help our students on their path to major and career decisions?

- Encourage & facilitate:
 - active exploration
 - open-mindedness and adaptability to unexpected events
 - risk-taking
- Remember the non-linear nature of careers

DISCUSSION

As advisors, what kinds of questions can we ask students to prompt active exploration?

- Are there certain academic options or career paths you are considering?
- What are some actions you can take (in the next 24 hours, this semester, etc.) to explore academic and career possibilities?
- Have you considered finding an on-campus job, volunteer, internship or research position?
- Have you thought about getting involved on campus?
- What do YOU think career development looks like?

WHAT IS CAREER READINESS?

CAREER COMPETENCIES



**1 CRITICAL THINKING/
PROBLEM SOLVING**
Exercise sound reasoning to analyze issues, make decisions, & overcome problems.

**3 ORAL/WRITTEN
COMMUNICATIONS**
Articulate ideas effectively in written & oral forms to persons inside & outside of the organization.

**6 GLOBAL/
INTERCULTURAL FLUENCY**
Value, respect, & learn from diverse cultures, races, ages, genders, sexual orientations, & religions.

2 LEADERSHIP
Leverage the strengths of others to achieve common goals & use interpersonal skills to coach & develop others.

**4 CAREER
MANAGEMENT**
Identify & articulate one's skills, strengths, knowledge, & experiences relevant to the position desired & career goals, & identify areas necessary for growth.

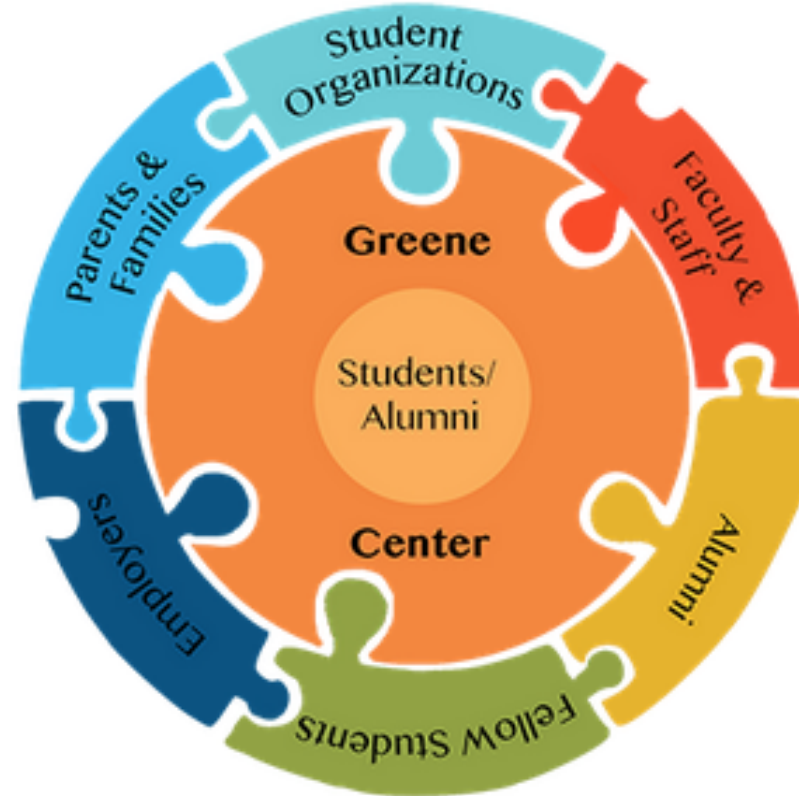
**7 DIGITAL
TECHNOLOGY**
Leverage existing digital technologies ethically & efficiently to solve problems, complete tasks, & accomplish goals.

**5 TEAMWORK/
COLLABORATION**
Build collaborative relationships with colleagues & customers representing diverse cultures, races, ages, genders, religions, lifestyles, & viewpoints.

**8 PROFESSIONALISM/
WORK ETHIC**
The individual demonstrates integrity, acts with the interests of the larger community in mind, & is able to learn from their mistakes.

CAREER COMMUNITIES

- Exploratory
- Arts, Entertainment, Communications, Marketing, and Media
- Consulting, Finance, Operations, and Sales
- Engineering, Technology, Data, and Physical Science
- Healthcare, Human Services, and Biomedical Research
- Law, Policy, and Social Good



REFER STUDENTS TO THE CAREER CENTER

- 1-1 Advising Appointments
- Drop-ins with Peer Career Advisors M-F 1-4pm
- Engage with Career Communities and events in Handshake
- CAS 104: Career Exploration course

REFER A STUDENT

You refer, we reach out!

Faculty and staff do you know of a Rochester undergraduate or graduate student that could use our assistance? Refer them to us using our online form.

[LEARN MORE](#)



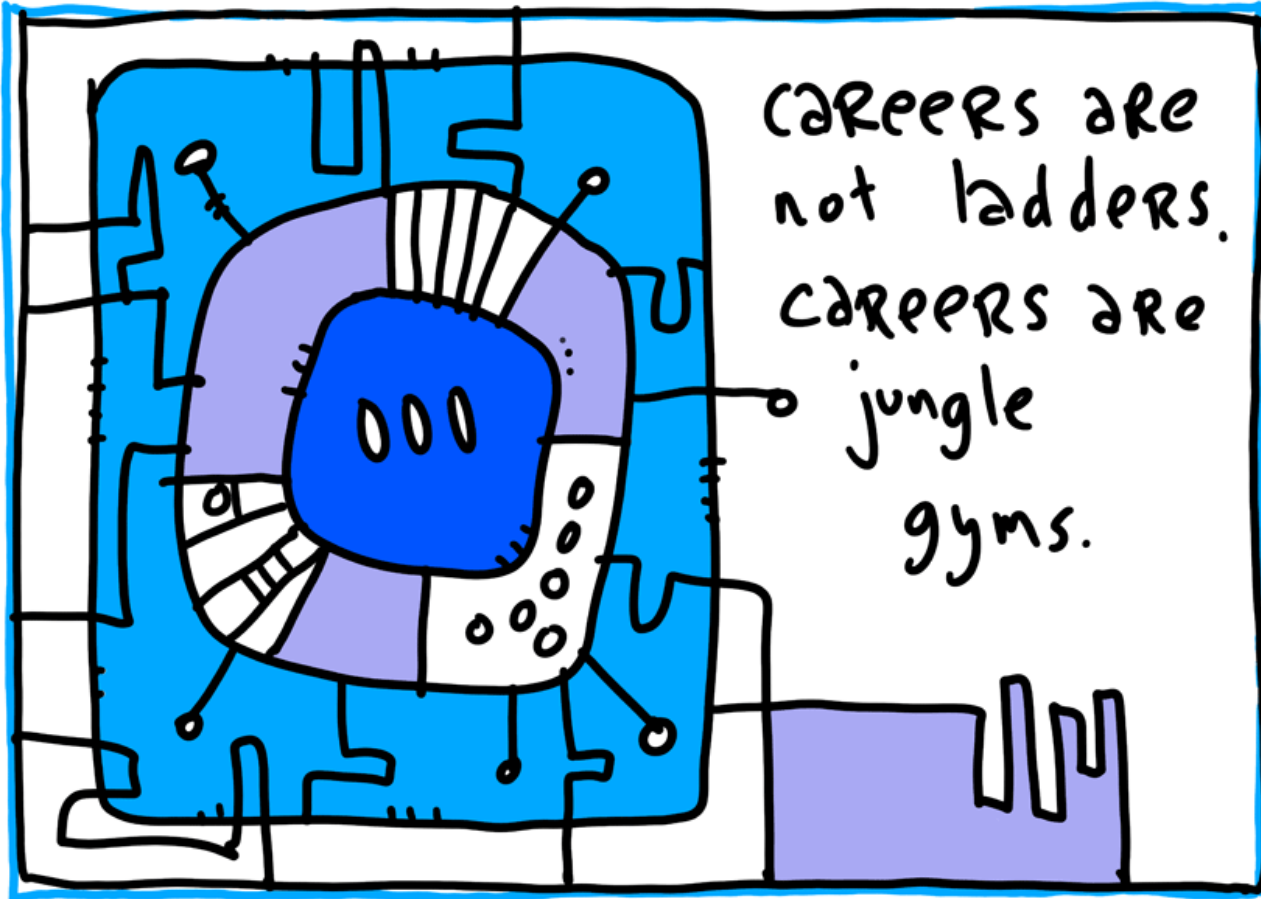
REFER A STUDENT

UPCOMING LUNCH & LEARNS FOR ADVISORS

“CAREER CONVERSATIONS WITH YOUR ADVISEES”

- Thursday September 21st, 12-1pm*
- Friday October 27th, 12-1pm*

Are there other topics you're interested in? Let us know!



@gapingvoid

Questions?